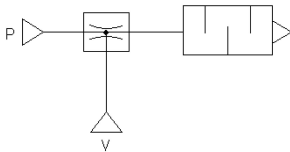


Vacuum Generator Series VG



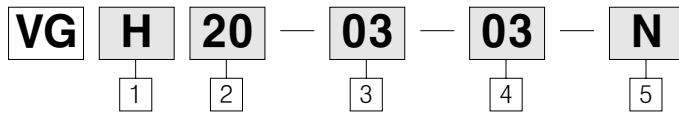
- COMPACT SIZE
- DIVERSIFICATION OF PORT SPECIFICATION (VACUUM AND SUPPLY PORT, RESPECTIVELY RC(PT) 1/4, 3/8)
- SEPARABLE NOZZLE (EASY TO REPLACE)
- MOUNTING HOLE WITH TAP OF ONE BODY TYPE
- IMPROVED MAXIMUM VACUUM LEVEL AND MAXIMUM SUCKING FLOW VOLUME
- ROBUST BODY STRUCTURE

Marking symbol



- P : Supply of compressed air
- V : Vacuum sucking

How to Order



1 Vacuum Features

- H : High vacuum
- L : High flow volume

2 Nominal size

- 20 : Nozzle size 1.4mm
- 30 : Nozzle size 2.0mm

3 Supply port size

- 02 : Rc(PT) 1/4
- 03 : Rc(PT) 3/8

4 Vacuum port size

- 02 : Rc(PT) 1/4
- 03 : Rc(PT) 3/8

5 Silencer installation

- No symbol : Silencer not equipped
- N : Silencer equipped

Product specification

Performance				
Description	H type(High vacuum)		L type(High flow volume)	
Model	VGH20	VGH30	VGL20	VGL30
Nozzle internal diameter (mm)	1.4	2.0	1.4	2.0
Maximum sucking flow volume (ℓ/min (ANR))	115 ↑	185 ↑	200 ↑	320 ↑
Highest vacuum pressure (-kPa(-mmHg))	90(675) ↑		70(525) ↑	
Maximum consumption flow volume (ℓ/min (ANR))	200 ↓	400 ↓	250 ↓	500 ↓
Maximum noise level[dB(A)]	65	75	68	78
Nozzle structure	1 level nozzle (2 units)			
Nozzle material	Aluminum alloy			
Connection internal diameter				
Air supply port	Ø10(Rc(PT)1/4, 3/8)			
Vacuum sucking port	Ø12(Rc(PT)1/4, 3/8)			
Silencer connection port	Rc(PT)3/8			